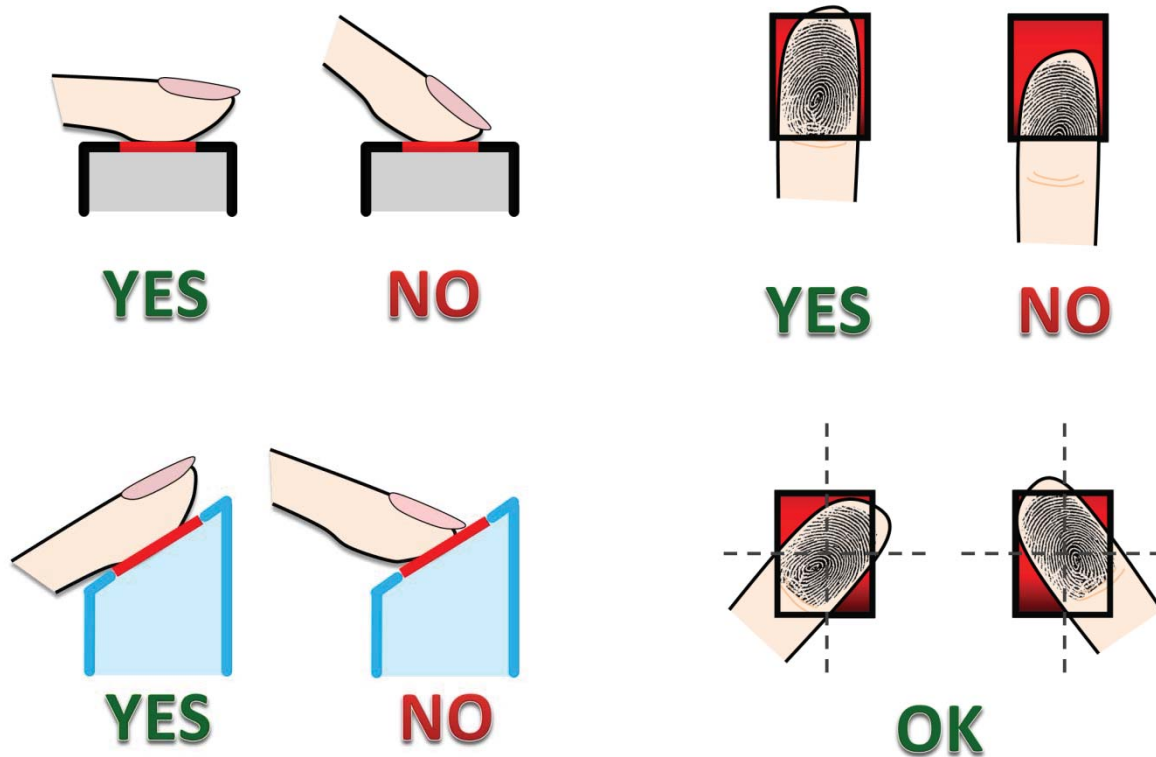


How to scan your finger

Place the pad of your finger at the center of the sensor

The pad is the fleshy part of the finger, located in the middle of the first segment. Be sure that the pad (not the tip) covers as much of the sensor window as possible so that the **core** of your fingerprint can be scanned. It is okay to place your finger at an angle.



Apply light pressure

Apply pressure lightly and evenly during the scanning process. Use as much pressure needed to hold a piece of paper between your fingers. Pressing too hard may result in a dark or blurred fingerprint.

Keep your finger still

The LED will light up to scan your fingerprint. Keep your finger in place while your fingerprint is scanned.

How to find the core of your fingerprint

The core of your fingerprint is located between the middle and lower edge of the first segment of your finger. An easy way to ensure that the core is scanned is to place your finger on the reader so that the first joint of the finger aligns with the bottom edge of the sensor window.

If you cut or injure your finger

As a precaution, it is best to enroll more than one finger so that if one finger becomes unavailable for authentication, you will have an alternate finger to use. Most biometric applications provide the option to enroll multiple fingers. If your application features a password or PIN back-up, you can use this feature in case no finger or fingerprint device is available. If none of these options work, please contact your IT administrator or technical support provider for help.